

The full-featured SnapSAN™ S2000 iSCSI SAN appliance offers many standard enterprise capabilities, providing industry-leading choices for keeping data stored, accessible and secure. But in the face of massive data growth and distributed IT environment needs, businesses of all sizes are concerned over deploying additional data provisions that eliminate downtime while maintaining data availability. Rest assured that the S2000 with optional Replication and Mirroring software features bring cost-effective, enhanced data protection to businesses that require more than simple component redundancy and RAID protection.

Highly Available

The SnapSAN S2000 optional Mirroring feature enhances data availability by simplifying deployment and management without the worry of high costs. The “Shared Nothing” Mirroring option utilizes two or more SnapSAN S2000 iSCSI appliances to create a seamless failover architecture that remains available through any connection, component or even complete system failure.

Disaster Recovery

Traditionally, block-based replication models only support a one-to-one relationship for replicating data. With S2000 Replication, administrators have the flexibility to support one-to-many replication models, which is required if you have one or more branch offices or backups offsite. Powerful snapshot technology is integrated with the asynchronous replication engine, enabling the replication of only the delta changes between jobs.

Easily Integrated

The S2000’s Mirroring feature can be integrated with Windows and VMware servers, providing flexible data protection so that administrators can choose the most critical data assets that need maximum protection. Protecting your critical server operating systems, the Replication option is OS agnostic, supporting Windows, Linux, UNIX, or Apple initiator hosts connected to the S2000.

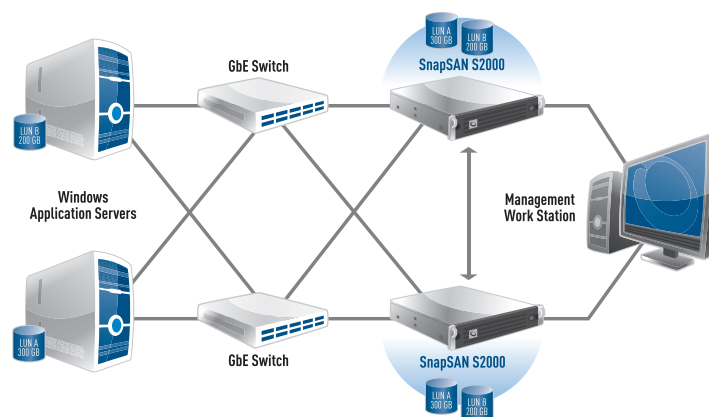


Highlights

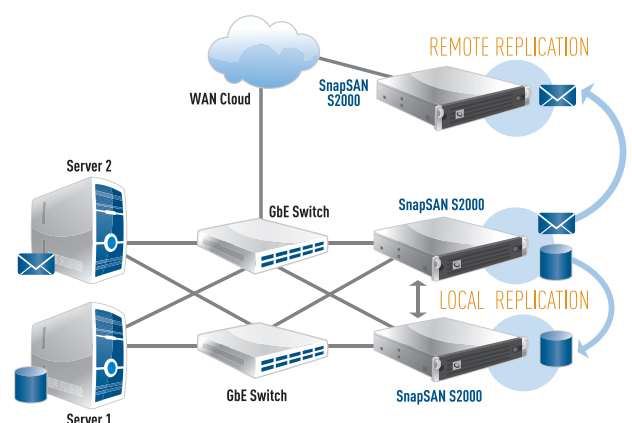
- Reduced TCO through simplified deployment and management
- Highly granular Replica Recovery Points
- File restoration and roll-back are more easily executed
- Integrated wizards for creating mirrors of volumes for Windows and VMware
- Replication scheme is capacity efficient

Part Number	SnapSAN description details
OV-SAN101004	SW - Replication, S2000 (One license required per SnapSAN S2000 appliance)
OV-SAN101005	SW - Mirroring, S2000 (One license required per SnapSAN S2000 appliance)

SnapSAN S2000 Mirroring



SnapSAN S2000 Replication



Sales Offices

Americas
125 S. Market Street
San Jose, CA 95113
USA
Tel: 1 (858) 571-5555

Asia Pacific
16 New Industrial Road #04-04
Hudson TechnoCentre, Singapore
536204
Tel: +65 6866 3847

France
18 Rue Jean Rostand
Orsay
91400, France
Tel: +33 1 81 91 73 40

Germany
Wilhelm Wagenfeld Straße 28
80807 München
Germany
Tel: +49 893 298 90860

United Kingdom
Ashville Way
Wokingham, Berkshire
RG41 2PL England
Tel: +44 (0) 118 989 8000